

SPECIFICATIONS

ENGINE

ModelMHI S4KT
 Type4-cycle water-cooled, direct injection
 AspirationTurbocharged
 No. of cylinders..... 4
 Rated power
 ISO 9249, net 95PS (69.9kW) at 1950 min⁻¹ (rpm)
 SAE J1349, net 95PS (69.9kW) at 1950 min⁻¹ (rpm)
 Maximum torque 372 Nm (37.9 kgfm) at 1 400 min⁻¹ (rpm)
 Piston displacement..... 4.249 L
 Bore and stroke 102 mm x 130 mm
 Batteries2 x 12V / 80AH

HYDRAULIC SYSTEM

Hydraulic Pumps

Main pumps2 variable displacement axial piston pumps
 Maximum oil flow2 x 105 L/min
 Pilot pump.....1 gear pump
 Maximum oil flow30.24 L/min

Hydraulic Motors

Travel2 variable displacement axial piston motors
 Swing1 axial piston motor

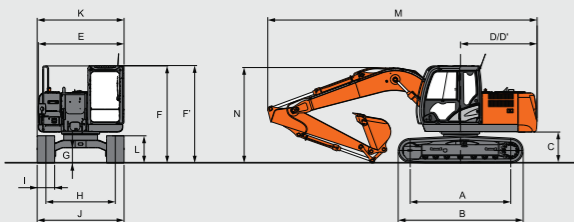
Relief Valve Settings

Implement circuit34.3 MPa (350 kgf/cm²)
 Swing circuit32.3 MPa (330 kgf/cm²)
 Travel circuit34.3 MPa (350 kgf/cm²)
 Pilot circuit4.0 MPa (41 kgf/cm²)
 Power boost36.3 MPa (370 kgf/cm²)

BACKHOE ATTACHMENTS

Capacity	Width		No. Of teeth	Weight	Recommendation	
	Without side cutters	With side cutters			2.10 m arm	3.01 m arm
0.7 m ³ (GP)	1066 mm	1186 mm	5	508 kg	✓	
0.6 m ³ (HD)	931 mm	—	4	574 kg	✓	
0.45 m ³	802 mm	—	4	475 kg		✓

DIMENSIONS



Unit: mm

A Distance between tumblers	2 880	I Track shoe width	500
B Undercarriage length	3 580	J Undercarriage width	2 490
* C Counterweight clearance	865	K Overall width	2 490
D Rear-end swing radius	2 190	* L Track height with triple grouser shoes	790
D' Rear-end length	2 190	M Overall length	
E Overall width of upperstructure	2 431	With 2.10 m arm	7 658
F Overall height of cab	2 718	With 3.01 m arm	7 710
F' Overall height of upperstructure	2 718	N Overall height of boom	
* G Min. ground clearance	440	With 2.10 m arm	2 579
H Track gauge	1 990	With 3.01 m arm	2 680

* Excluding track shoe lug G: Triple grouser shoe

UPPER STRUCTURE

Swing speed 13.7 min⁻¹ (rpm)

UNDER CARRIAGE

Tracks

Heat-treated connecting pins with dirt seals Hydraulic (grease) track adjusters with shock-absorbing recoil springs.

Numbers of Rollers and Shoes on Each Side

Upper roller1
 Lower rollers7
 Track shoes44
 Track guard1

Travel Device

Each track driven by 2-speed axial piston motor
 Parking brake is spring-set/hydraulic-released disc type.
 Automatic transmission system: High-Low

Travel speedsHigh : 0 to 5.5 km/h
 Low : 0 to 3.4 km/h

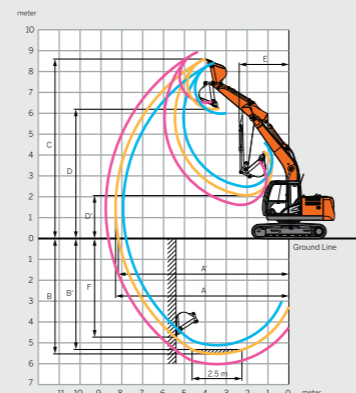
Maximum traction force ... 102 kN (10400 kgf)

Gradeability70% (35 degree) continuous

SERVICE REFILL CAPACITIES

Fuel tank2500 L
 Engine coolant.....190 L
 Engine oil18.5 L
 Swing device3.2 L
 Travel device (each side)4.0 L
 Hydraulic system1700 L
 Hydraulic oil tank.....690 L

WORKING RANGES



Unit: mm

Arm length	2.10 m	3.01 m
A Max. digging reach	7 900	8 740
A' Max. digging reach (on ground)	7 770	8 620
B Max. digging depth	5 150	6 060
B' Max. digging depth for 2.5 m level	4 910	5 870
C Max. cutting height	8 370	8 900
D Max. dumping height	5 960	6 490
D' Min. dumping height	2 487	1 607
E Min. swing radius	2 310	2 590
F Max. vertical wall digging depth	4 650	5 500



TATA HITACHI

UNBEATABLE PERFORMANCE



ZAXIS 140H

GI SERIES

95 PS @ 1950 rpm | 13360 kg | 0.45 - 0.7 m³

Tata Hitachi Construction Machinery Company Private Limited
 Registered Office: Jubilee Building, 45 Museum Road, Bangalore, India 560025
 Telephone: +91 80 6695 3301 / 02 / 03 / 04 / 05 | Toll Free : 1800 121 6633
 Email: info@tatahitachi.co.in | Website: www.tatahitachi.co.in

Authorised Dealership

These specifications are subject to change without prior notice. The machine depicted may vary from the actual machine. Please contact our nearest office for latest specifications. Accessories shown here are not part of the standard equipment. Performance of the machine may vary with site and operating conditions encountered.

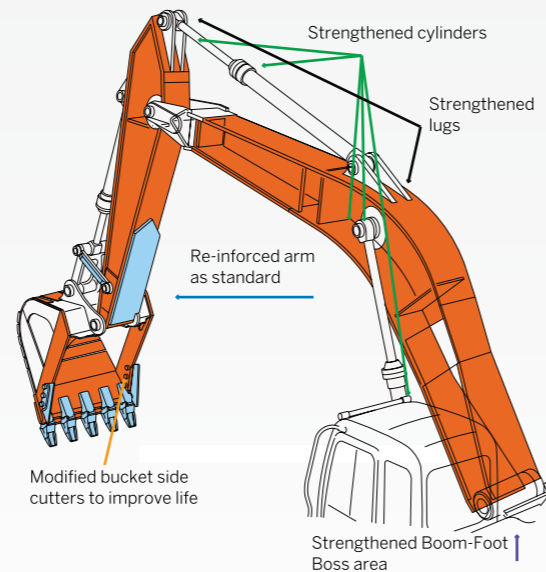


SUPERIOR PERFORMANCE

- Enhanced power boost – 5% higher digging force
- Powerful lifting operation-Auto Power lift
- Rapid arm roll in, Swift front movements – HIOS III Hydraulics
- Fuel thrifty excavator - ECO mode

HIGH DURABILITY

- Rock –Solid durable front attachment (use of high grade steel)
- Durable reliable turbocharged Japanese engine.
- Monolithically made X beam frame for higher rigidity .
- Reinforced Idler brackets & travel motor for longer life.



OPERATOR COMFORT & SAFETY

- Exceptional comfort with spacious , robust cabin, suspension seat with headrest and AC
- Ergonomic control lever, multifunction monitor for easy operation
- Emergency engine shut off, pilot controlled shut off lever for operator's safety
- FM Radio with roof speakers for operator's comfort.



SIMPLIFIED MAINTENANCE

- Grouped remote inspections points , electric fuel filling pump(optional) for easy maintenance
- Dust proof indoor net with parallel ROC for efficient cooling
- Low life cycle cost
- Control your fleet with ConSite . ConSite provides easy access to machines, info on fuel level, emergency alarms etc for proactive maintenance.

