

## SPECIFICATIONS

### ENGINE

Model.....Cummins 6BT5.9C  
 Type.....6 cylinder in-line water cooled  
 Rated fly wheel power.....133 PS @ 2000 rpm  
 Max.torque.....54.8 kgf-m @ 1300 rpm  
 Batteries.....2 X 12 V

### HYDRAULIC SYSTEM

Main pumps.....2 variable displacements axial piston pumps  
 Max. oil flow.....2 X 221 lpm  
 Pilot pump.....1 gear pump  
 Max. oil flow.....20 lpm

### SUPERSTRUCTURE

Swing speed.....13.7 rpm

### RELIEF VALVE SETTINGS

Implement circuit.....285 kgf/cm<sup>2</sup>  
 Swing circuit.....260 kgf/cm<sup>2</sup>  
 Travel circuit.....350 kgf/cm<sup>2</sup>  
 Pilot circuit.....40 kgf/cm<sup>2</sup>

### UNDERCARRIAGE

Travel speeds.....0-4.2 kmph  
 Max.traction force EX210LC.....15,200 kgf  
 Gradeability.....35° (70% continuous)  
 No.of upper rollers.....2  
 No. of lower rollers.....8  
 No. of track shoes.....52  
 Shoe width EX210LC.....600 mm

### SERVICE REFILL CAPACITIES

Hydraulic tank.....129.0 ltr  
 Hydraulic system.....220.0 ltr  
 Fuel tank.....315.0 ltr  
 Engine coolant.....35.0 ltr  
 Engine oil (Sump).....14.0 ltr  
 Swing device.....6.7 ltr  
 Travel device (Each side).....6.8 ltr

### WEIGHTS AND GROUND PRESSURE

Machine	Operating weight	Ground pressure
EX210LC Backhoe	20,600 kg	0.44 kgf /cm <sup>2</sup>

### DIGGING FORCES

#### BACKHOE

Bucket digging forces.....11000 kgf

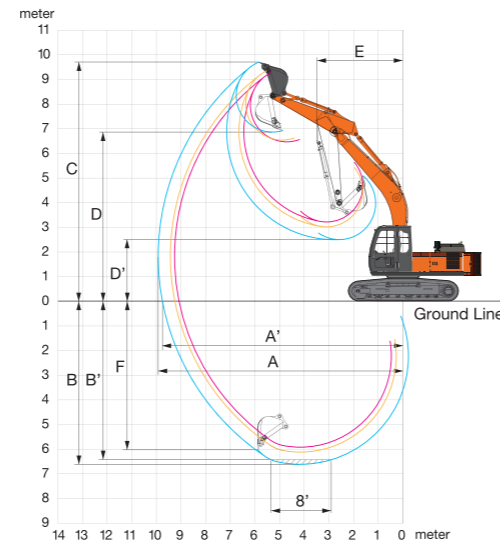
	1.90 m	2.22 m	2.90 m
Arm length			
Arm digging force	12500 kgf	11300 kgf	8800 kgf

### BUCKETS

#### BACKHOE

Capacity	Width without side cutter	Weight (approx.)	Tooth points
0.86 m <sup>3</sup>	997 mm	940 kg	4
0.91 m <sup>3</sup>	1150 mm	741 kg	5
1.00 m <sup>3</sup>	1256 mm	805 kg	5
1.20 m <sup>3</sup>	1450 mm	690 kg	-
1.50 m <sup>3</sup>	1780 mm	567 kg	-

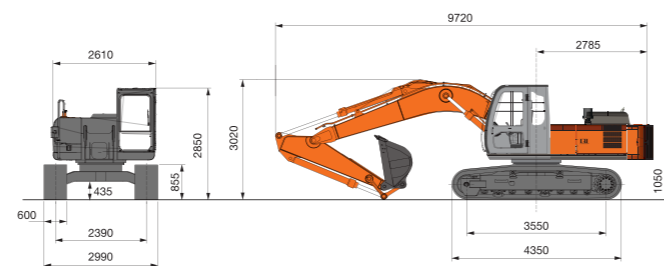
#### BACKHOE ATTACHMENT



### WORKING RANGES

BACKHOE		5680		
	Boom length			
	Arm length	1900	2220	2900
A	Max. digging reach	9110	9250	9910
A'	Max. digging reach (on ground)	8920	9060	9740
B	Max. digging depth	5580	5910	6600
B'	Max. digging depth (8' level)	5340	5670	6420
C	Max. cutting height	9340	8990	9400
D	Max. dumping height	6480	6230	6610
E	Min. swing radius	4010	3720	3660
F	Max.vertical wall depth	4950	5050	5980

### DIMENSIONS



All dimensions are in mm

CHALO  
DESH  
BANAYE

TATA HITACHI

Reliable solutions

# EXPERIENCE THE POWER OF



**EX210LC**  
**Super**  
 SERIES



### Tata Hitachi Construction Machinery Company Private Limited

Registered Office: Jubilee Building, 45 Museum Road, Bangalore, India 560025

Telephone: +91 80 6695 3301 / 02 / 03 / 04 / 05 | Toll Free : 1800 121 6633

Email: info@tatahitachi.co.in | Website: www.tatahitachi.co.in |

These specifications are subject to change without prior notice. The machine depicted may vary from the actual machine. Please contact our nearest office for latest specifications. Accessories shown here are not part of the standard equipment. Performance of the machine may vary with site and operating conditions encountered.

Authorised Dealership

Model : EX210LC

Engine Power : 133 PS @ 2000 rpm

Operating Weight : 20,600 kg

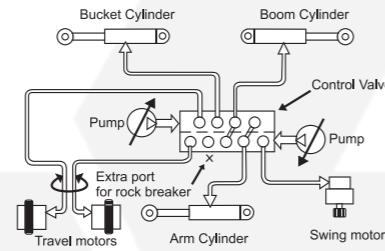
Bucket Capacity : 0.86 - 1.5 m<sup>3</sup>

THMEX210LCSUPER-41P/NOV2019

# Superior Hydraulics

Hitachi's original Optimum Hydraulic System – Benefit: fast and smooth combined operations for higher performance. It features:

- ✦ Cross sensing summation system
- ✦ Fuel saving pump system
- ✦ Original pilot circuit
- ✦ Boom and Arm regeneration, holding valves
- ✦ Spare spool for attachments
- ✦ Absolute type hydraulic filter



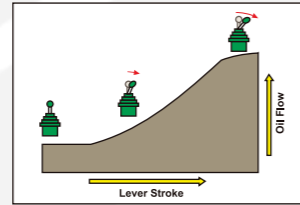
**Boom & Arm Regeneration**  
resulting in energy saving



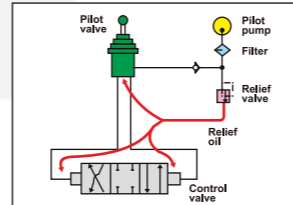
Reliable hydraulic aggregates



Absolute type hydraulic filter for complete hydraulic system protection against contamination



Oil flows in proportion to lever stroke. Load is minimum at neutral position saving fuel



Higher pressure circuit is actuated by a lower pressure pilot circuit reducing jerks on operator

# Unparalleled Versatility

- ✦ EX200LC comes in various tailor made options and is easily customizable for use with multiple other attachments and accessories.
- ✦ EX200LC has options of factory fitted rock breaker piping kits with return line filter



Alicon rock breaker



With factory fitted rock breaker piping kit as option



Super Long Front

# Power Optimization

- ✦ Powered by reliable and fuel efficient Cummins 6BT5.9C engine.
- ✦ Auto Idle and Auto Deceleration (Original Tata Hitachi technology)
- ✦ Stepper motor based precise engine speed control; Dial type throttle
- ✦ Mode selection feature [EP mode, HP mode]
- ✦ Default EP mode – engine starts in EP mode only, reducing fuel consumption and protecting the engine
- ✦ Engine efficiency improvement for lower fuel consumption



Fuel efficient engine



Dial type throttle

# Efficiency Boosters

- ✦ Most comfortable heavy duty suspension seat in its class with dual tone fabric
- ✦ Ergonomic roomy cabin with single radius A Pillar and handrail
- ✦ New and improved audio player (USB+ FM)
- ✦ Heat reflective coating on cabin top
- ✦ Engine hot air draft redirection
- ✦ New premium upholstered interiors
- ✦ New hinged sleek honeycomb mesh ROC door with lock
- ✦ New honeycomb mesh pump side door
- ✦ Cyclonic type pre-cleaner
- ✦ Aluminum ROC for better cooling
- ✦ Reduced engine hood height for superior visibility
- ✦ Upgraded monitor, ergonomic hand grips and controls
- ✦ Hydra-mounts for cab mounting
- ✦ Battery relay protection cover
- ✦ InSite enabled (Insights into your job site)
- ✦ 2 extra cab lights & Front guard as standard



Improved serviceability



Spacious and comfortable working space with well laid out controls



Honeycomb mesh type ROC door



Easy to service



Heat reflective coating on cabin top



Premium heat insulating interior upholstery



Cyclonic type air pre-cleaner



New premium audio player (USB + FM)

# Return on Investment

- ✦ Highest resale value
- ✦ Lower operating cost
- ✦ Best in class fuel efficiency
- ✦ Wide spread dealer network for easy availability of spare parts
- ✦ Field diagnostic vehicle for quicker after sales support
- ✦ Peace of mind through extended warranty
- ✦ Extended service intervals for reduced maintenance cost:
  - Hydraulic oil change: 4500 Hours
  - Hydraulic filter change: 1500 hours



**4500 Hrs**  
Hydraulic oil change interval



**Default EP Mode**  
resulting in fuel saving



**1500 Hrs**  
Hydraulic filter change interval



**EXTENDED WARRANTY**  
Upto 3 years or 7500 hours whichever is earlier\*



Field service vehicle



Maintenance intervals mentioned are for bucket operation only and subject to use of genuine and recommended grade of spares for the interval. It is also subject to contamination levels being within limits to be established from time to time.

\*Conditions apply