

NEW

EX70 *PRIME*
SERIES

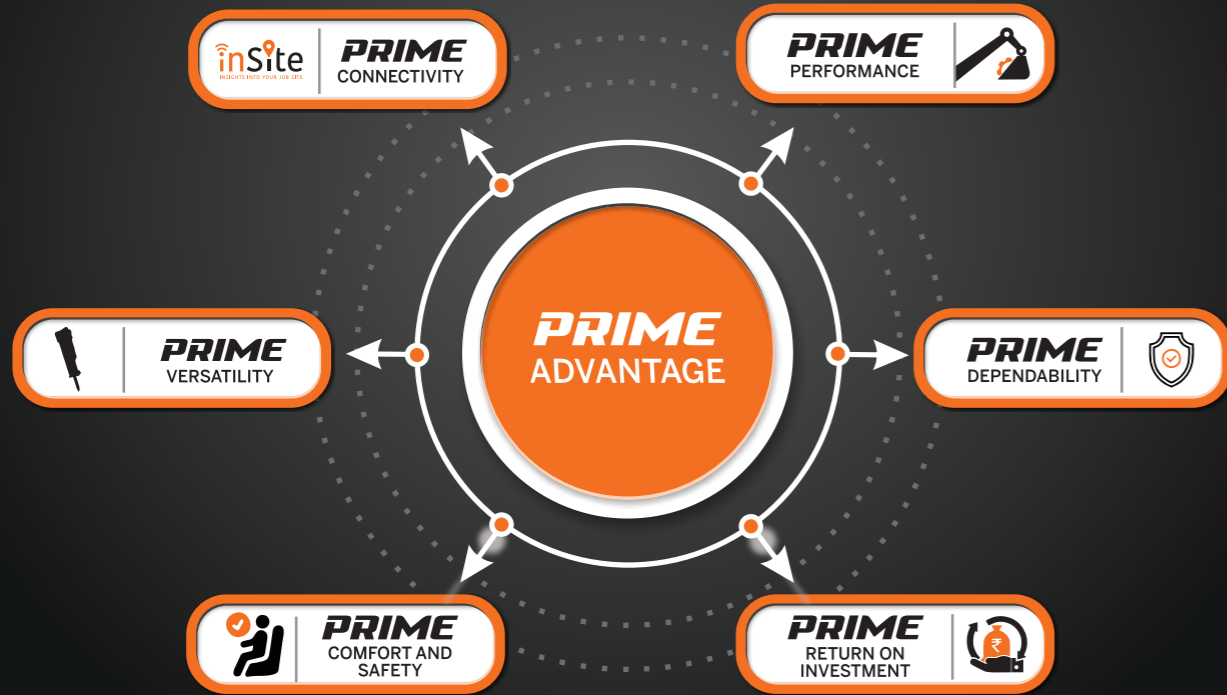
SPEND LESS. EARN MORE.

Experience The Prime Advantage



PRIME
SERIES

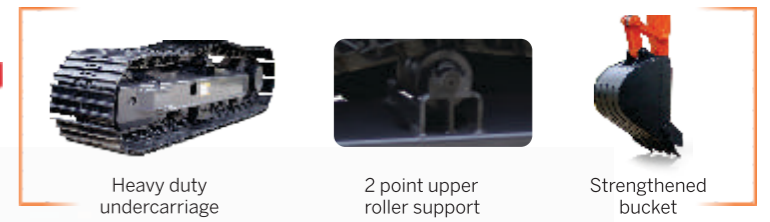
Everything you need in your 7 Ton Excavator is Performance, Dependability, Comfort, Safety, Return On Investment, Connectivity and Versatility. Tata Hitachi's EX 70 Prime Series Hydraulic Excavator sets benchmarks in all these areas. The machine has been designed to provide precision control, high fuel efficiency, high productivity, superior operator comfort, excellent versatility and unmatched return on investment.



PRIME DEPENDABILITY

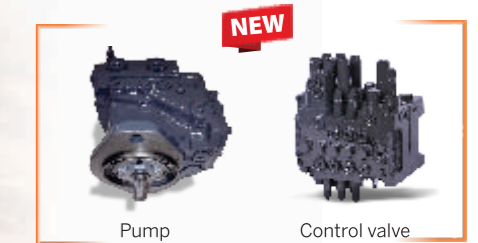
Higher Durability

- Strengthened arm bucket joint (10% higher boss diameter and flanged bushes) **NEW**
- Reinforced track frame (near idler) **NEW**
- HD track frame **NEW**
- Track guard as standard fitment **NEW**
- 2 point upper roller support **NEW**
- Strengthened bucket



Higher Reliability

- Proven Hitachi technology
- CAD designed, robot welded, tested and validated to international standards
- Proven and reliable aggregates



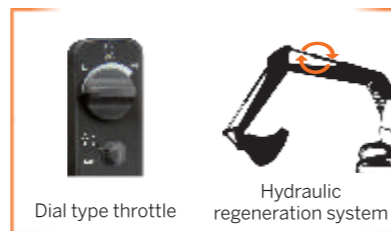
PRIME PERFORMANCE

Higher Production

- Next generation high torque engine (20% higher torque engine) **NEW**
- Engine compatible with futuristic emission norms **NEW**
- Intelligent Optimum Hydraulic System (iOHS) **NEW**
- Wide range of buckets designed for higher fill factor

Least Fuel Consumption

- Auto Idle and Auto Deceleration
- Mode selection- EP and HP mode
- Dial type throttle
- Fuel saving pump system
- Hydraulic regeneration system



Engine

PRIME RETURN ON INVESTMENT



Low Fuel Consumption

- iOHS Japanese hydraulics **NEW**
- Fuel saving pump
- Dual work modes



Low Maintenance Cost

- Long drain hydraulic oil – 4500hrs
- Maintenance free cyclonic air pre cleaner for longer engine life
- Fuel pre filter for better filtration efficiency
- HP return line filter for longer life of hydraulic aggregates



High Resale Value

- Most trusted brand
- Largest dealer network
- Highly reliable & durable machines
- Easy availability of parts & support

Extra Profit over 5 years

₹ 15,10,000*



*Based on testing done in controlled and standard environment. Terms and condition apply



- Boom arm regeneration
- Holding valves in boom arm bucket
- Rock breaker piping kit (optional)



- Sturdier bucket cylinder with metallic cap for seal protection
- 11% larger pin diameter **NEW**
- Flanged bushes **NEW**
- 10% bigger boss **NEW**



- Improved durability of
- 0.13 m³ Trench
- 0.30 m³ HD
- 0.32 m³ GP (7% bigger) **NEW**
- 0.35 m³ LM
- 0.68 m³ Salt



- Comfortable and roomy cabin
- Weight adjustable suspension seat.
- Seat belt, fan, all new music system for operator comfort and safety



- 100% pilot operation (including travel and dozer) **NEW**
- 30% smoother pilot levers **NEW**



- Future ready hi torque BS III engine **NEW**
- All new cyclonic pre-cleaner **NEW**
- New dust proof indoor net **NEW**



- All new high efficiency hydraulic pump **NEW**
- New generation control valve **NEW**
- Hitachi's proven hydraulics for powerful performance



- Choice of track shoe - 450 mm/600 mm
- HD track chain
- Double supported upper roller **NEW**
- Dozer cylinder guard for cylinder protection



PRIME COMFORT AND SAFETY

Comfort

- Smooth operating levers. 30% reduced effort **NEW**
- Ergonomic controls with all new audio player (USB+FM), fan for prime comfort **NEW**
- 100% pilot controlled operations including dozer & travel
- Weight adjustable suspension seat with multiple seat adjustments
- Air Conditioning (Optional)

Safety

- Seat belt, front guard, anti skid tapes for operator's safety
- Baffle plates to separate hot & cold zones
- Starter motor with thermal cut off to prevent over cranking



PRIME VERSATILITY

Attachments :

- The machine comes in tailor made options and is easily customizable with various attachments
- Option of factory fitted rock breaker piping kit



Options* :

Available in below options:

- Arm - Standard arm / Long arm
- Tracks - 450 mm / 600 mm
- Wide range of buckets for wide variety of applications



*Combinations will be based on application suitability and design approval

PRIME CONNECTIVITY



inSite
INSIGHTS INTO YOUR JOB SITE

TELEMATICS SUITE
FOR REAL TIME MONITORING



Ability to track Machine Maintenance Service due date



Fleet Management



Overall Fleet Summary in Graphical Widgets (Dashboard)



Fuel Level



Location, Geo Fencing



Asset Operation



Asset Utilisation



Accessible on Web and App



SUPPORT CHAIN

SUPPORT SOLUTIONS

- Wide spread dealer network for easy availability of spare parts
- Field diagnostic vehicle and mobile workshop for quicker after-sales service
- Peace of mind through extended warranty*
- Extended service intervals for reduced maintenance cost



4500 Hrs Hydraulic oil change interval

EXTENDED WARRANTY
COMPLETE PEACE OF MIND

2 years or 5000 hours whichever is earlier*



SPECIFICATIONS

ENGINE

| | |
|-----------------------------|--|
| Model | TATA 497 DI 38 BSIII |
| Rated | Water cooled, 4 cylinder in-line diesel engine |
| Rated fly wheel power | 49PS @ 2000 rpm |
| Max.torque | 222 Nm @1400rpm |
| Batteries | 2x12V |

HYDRAULIC SYSTEM

| | |
|------------------|---|
| Main pumps | 2 variable displacements axial piston pumps |
| Flow rate | 2x60 lpm |
| Pilot pump | 1 gear pump |
| Flow rate | 18.2 lpm |

SUPERSTRUCTURE

| | |
|-------------------|---------|
| Swing Speed | 12.8rpm |
|-------------------|---------|

RELIEF VALVE SETTINGS

| | |
|-------------------------|-------------------------|
| Implement circuit | 265 Kgf/cm ² |
| Swing circuit | 235 Kgf/cm ² |
| Travel circuit | 280 kgf/cm ² |
| Pilot circuit | 35 kgf/cm ² |

UNDERCARRIAGE

| | |
|-----------------------------|------------------------|
| Travel Speed | Low 2.5- High 5.0 kmph |
| No. of upper rollers | 1x2 |
| No. of lowers rollers | 5x2 |
| No. of track shoes | 37x2 |
| Shoe width | 450mm |

SERVICE REFILL CAPACITIES

| | |
|---------------------------------|-----------|
| Hydraulic tank | 42.0 ltr |
| Hydraulic system | 92.0 ltr |
| Fuel tank | 135.0 ltr |
| Engine coolant | 15.5 ltr |
| Engine oil | 9.0 ltr |
| Travel device (Each side) | 3.0 ltr |

WEIGHTS AND GROUND PRESSURE

| Machine | Operating weight | Ground pressure |
|-----------------------------|------------------|---------------------------|
| Backhoe with Dozer Blade | 7200 kg | 0.34 kgf /cm ² |
| Backhoe without Dozer Blade | 6700kg | 0.32 kgf /cm ² |

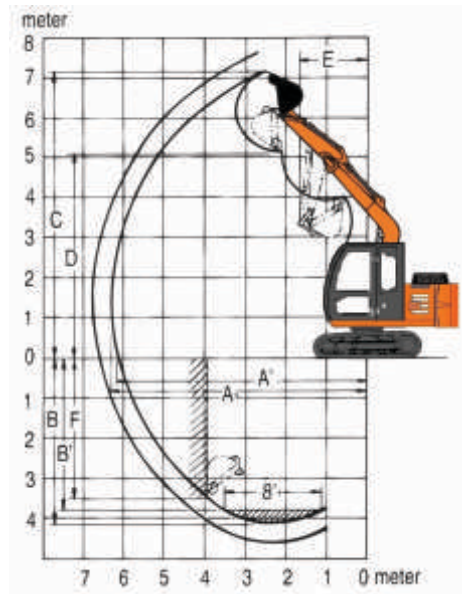
DIGGING FORCES

| | |
|----------------------|----------|
| Bucket digging force | 4800 kgf |
| Arm crowd force | 3700 kgf |

BUCKETS

| Capacity | Width with side cutter | Width without side cutter | Weight | Tooth Points | Type |
|---------------------|------------------------|---------------------------|--------|--------------|-----------------------------------|
| 0.35 m ³ | 860 mm | 770 mm | 212 kg | 4 | Wider GP |
| 0.32 m ³ | 795 mm | 705 mm | 228 kg | 4 | GP |
| 0.30 m ³ | 750 mm | 660 mm | 216 kg | 4 | HD |
| 0.13 m ³ | - | 360 mm | 167 kg | 2 | Trench |
| 0.68 m ³ | - | 1350 mm | 240 kg | - | LD Less than 800kg/m ³ |

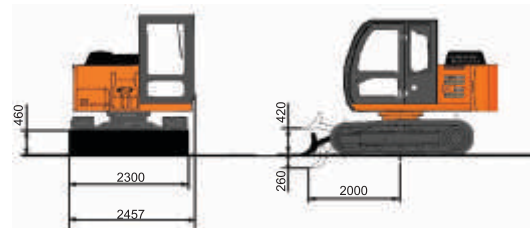
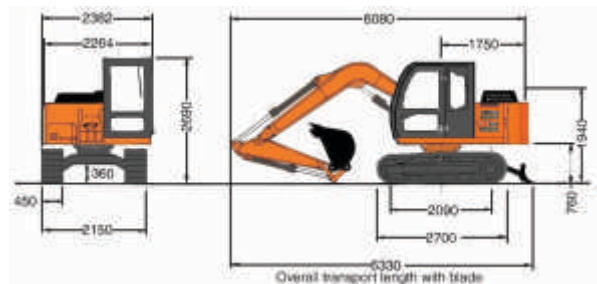
WORKING RANGES



| | | 3720 | |
|---|--------------------------------|------|------|
| | | 1620 | 2120 |
| A | Max. digging reach | 6310 | 6800 |
| A | Max. digging reach (on ground) | 6160 | 6660 |
| B | Max. digging depth | 4150 | 4660 |
| B | Max. digging depth (8 level) | 3800 | 4370 |
| C | Max. culting height | 7150 | 7550 |
| D | Max. dumping height | 5070 | 5470 |
| E | Min. swing radius | 1700 | 2060 |
| F | Max. vertical wall depth | 3500 | 4060 |

All dimensions are in mm

DIMENSIONS



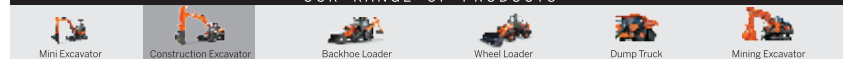
All dimensions are in mm

Tata Hitachi Construction Machinery Company Private Limited

Registered Office: Jubilee Building, 45 Museum Road, Bangalore, India 560025
Telephone: +9180 66953301 / 02 / 03 / 04 / 05 | Email: info@tatahitachi.co.in



OUR RANGE OF PRODUCTS



Authorised Dealer



These specifications are subject to change without prior notice. The machine depicted may vary from the actual machine. Please contact our nearest office for latest specifications. Accessories shown here are not part of the standard equipment. Performance of the machine may vary with site and operating conditions encountered.